



**CAROLINA CERAMICS**



**BRICK COMPANY**

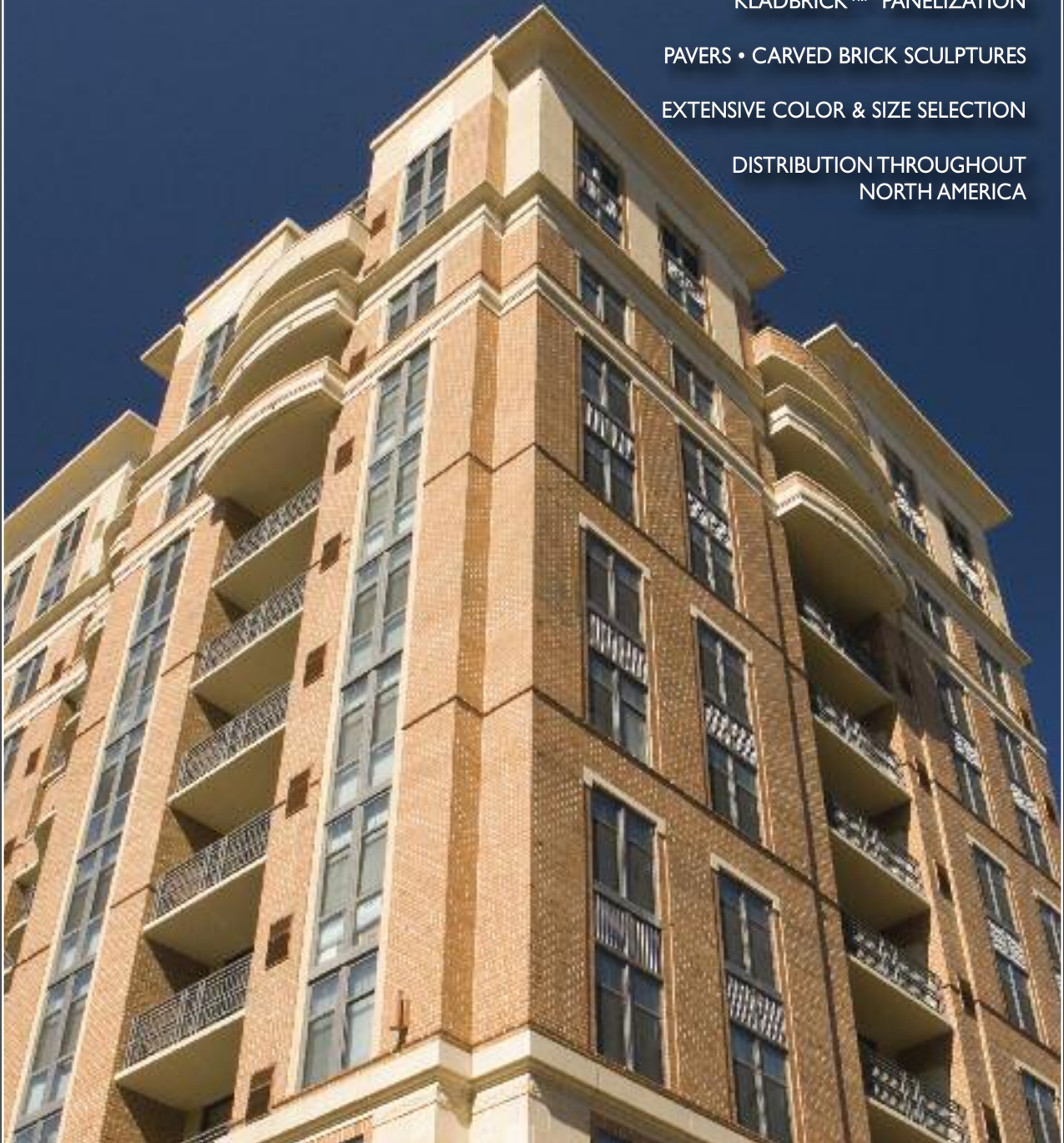
ARCHITECTURAL & RUSTIC BRICK

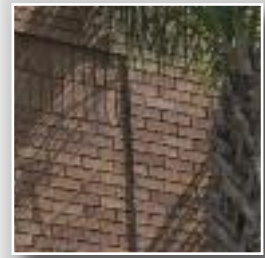
KLADBRICK™ PANELIZATION

PAVERS • CARVED BRICK SCULPTURES

EXTENSIVE COLOR & SIZE SELECTION

DISTRIBUTION THROUGHOUT  
NORTH AMERICA

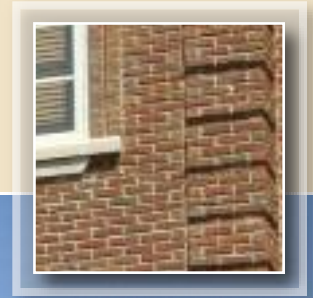
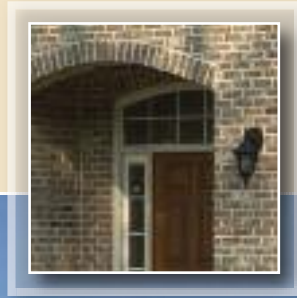




## **CAROLINA CERAMICS BRICK COMPANY**

is committed to manufacturing products that provide exceptional energy efficiency, durability, recyclability and low maintenance. Our manufacturing facilities meet or exceed state and federal environmental regulations, and we are committed to always improving our manufacturing process, thereby reducing environmental impact.





## TECHNOLOGY MEETS TIME-TESTED QUALITY

Our manufacturing facility utilizes advanced brick-making equipment. Using the largest brick-handling robot in the world and state-of-the-art kilns, Carolina Ceramics can offer outstanding quality control. Craftsmanship sets us apart, and our attention to detail enables Carolina Ceramics to surpass industry standards.

*Midlands Technical College  
Northeast Campus • Columbia, SC  
Rosewood and Burgundy  
Smooth Closures  
Calloway, Johnson, Moore and West, PA  
Lexington, SC*

## THE SOUTHERN PALETTE

The sand and clay of the Southeastern United States offers Carolina Ceramics the ability to create unrivaled brick colors. We are continually adding new products to our line. In addition to offering rich through-the-body colors, our flexible packaging capabilities allow us to blend multiple colors together in one order. Imagine the range of possibilities! You may be surprised by our palette, but don't be surprised when your building is recognized for its extraordinary brick.



# Architectural Collection



BLUE BLACK



CRIMSON DARK SMOOTH



CRIMSON LIGHT SMOOTH



TEAKWOOD SMOOTH



CRIMSON DARK VELOUR



CRIMSON LIGHT VELOUR



TEAKWOOD VELOUR



CHESTNUT SMOOTH



CHESTNUT VELOUR



SABLE SMOOTH



SABLE VELOUR



JATOBA



TOPAZ IRONSPOT SMOOTH



TOPAZ VELOUR



TOPAZ SMOOTH



HERITAGE VELOUR



HERITAGE SMOOTH



IRONSPOT



RED WIRECUT



RED FLASHED WIRECUT



RED FLASHED SMOOTH



RED SMOOTH



TERRA COTTA VELOUR



TERRA COTTA SMOOTH



BURGUNDY VELOUR



BURGUNDY IRONSPOT



BURGUNDY SMOOTH



CHERRY VELOUR



CHERRY SMOOTH



ROSEWOOD VELOUR



PEBBLE BEACH VELOUR



DOGWOOD SMOOTH



ROSEWOOD SMOOTH



PEBBLE BEACH SMOOTH



DOGWOOD VELOUR



CAMELOT

# Architectural Collection



EMPIRE IVORY VELOUR



SHADOW GRAY SMOOTH



COLONIAL GRAY VELOUR



EMPIRE IVORY SMOOTH



SHADOW GRAY VELOUR



COLONIAL GRAY SMOOTH





Spring Valley High School • Columbia, SC • Empire Ivory Velour and Colonial Gray Velour Utilities  
JHS Architecture: Integrated Design, Inc. • Columbia, SC



South Carolina State University - Student Housing • Orangeburg, SC • Rosewood Velour Modulares  
Design Collective, Inc. • Baltimore, MD/Durham, NC



Walgreens, Cincinnati, OH • Topaz Velour Utilities  
CR Architecture + Design • Cincinnati, OH



Private Residence • Sierra Queens

# Provincial Collection

04 21 00/CAR  
BuyLine 9447



BAJA



BISCAY



BISCAY STRAIGHT EDGE



MILAN



VALENCIA



VALENCIA STRAIGHT EDGE



TUSCANY



MADRID



MADRID STRAIGHT EDGE



MONACO



SIERRA



MONACO STRAIGHT EDGE



VIENNA



BIANCO

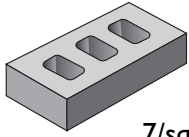


VERONA

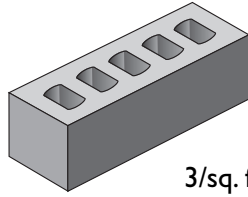


Private Residence • Monaco

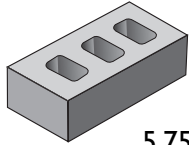
# Brick Sizes



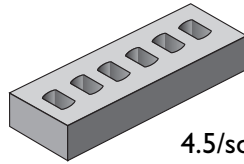
**MODULAR**  
7/sq. ft.  
w: 3-5/8  
h: 2-1/4  
l: 7-5/8



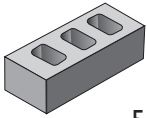
**UTILITY**  
3/sq. ft.  
w: 3-5/8  
h: 3-5/8  
l: 11-5/8



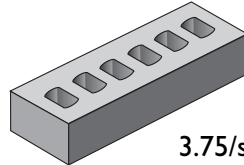
**ENGINEER**  
5.75/sq. ft.  
w: 3-5/8  
h: 2-3/4  
l: 7-5/8



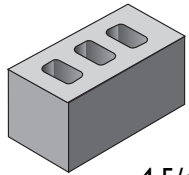
**NORMAN**  
4.5/sq. ft.  
w: 3-5/8  
h: 2-1/4  
l: 11-5/8



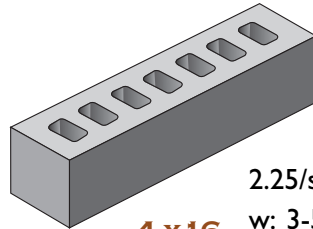
**QUEEN**  
5.75/sq. ft.  
w: 3  
h: 2-3/4  
l: 7-5/8



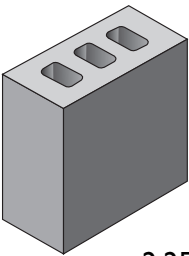
**NORWEGIAN**  
3.75/sq. ft.  
w: 3-5/8  
h: 2-3/4  
l: 11-5/8



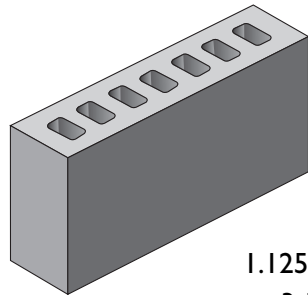
**CLOSURE**  
4.5/sq. ft.  
w: 3-5/8  
h: 3-5/8  
l: 7-5/8



**4 x 16**  
2.25/sq. ft.  
w: 3-5/8  
h: 3-5/8  
l: 15-5/8



**WALL UNIT**  
2.25/sq. ft.  
w: 3-5/8  
h: 7-5/8  
l: 7-5/8



**8 x 16**  
1.125/sq. ft.  
w: 3-5/8  
h: 7-5/8  
l: 15-5/8

Provincial Collection stocked in Modular, Engineer and Queen sizes.  
Also available in Utility size, straight-edge texture.

## SPECIFICATIONS:

DIVISION 4200—  
UNIT MASONRY

### PART II- PRODUCTS

#### 2.01 BRICK

##### A. Facing Brick

###### 1. Manufacturer:

Carolina Ceramics Brick Company  
9931 Two Notch Road  
Columbia, SC 29223-4390  
803.788.1916

###### 2. ASTM C 216, Grade SW,

Type \_\_\_\_\_

(FBS, FBA, or FBX)

###### 3. Blend Name:

\_\_\_\_\_

###### 4. Texture:

\_\_\_\_\_

###### 5. Dimensions:

\_\_\_\_\_ (bd) x \_\_\_\_\_ (h) x \_\_\_\_\_ (l)

###### 6. Minimum Compressive Strength:

\_\_\_\_\_

7. Provide brick similar in texture and physical properties to those available for inspection at architect/engineer's office.

8. Do not exceed variations in color and texture of samples accepted by architect/engineer.

###### 9. Special shape brick:

\_\_\_\_\_

Drawing #(s)

\_\_\_\_\_

per details supplied by

\_\_\_\_\_

to Carolina Ceramics. Final approval by project architect prior to manufacture.

##### B. Paving Brick

1. ASTM C-902, Class SX, Type I, and  
ASTM C-1272, Type R, Application PX.

### PART III- EXECUTION

Cleaning shall be as per specification in BIA  
Technical notes #20 and/or #14.

## PAVERS

Pathways, patios, landscaping beautification — Carolina Ceramics' line of pavers is designed to add value to the exterior of any building project. Providing outstanding durability in high traffic areas, pavers also add character and warmth. The unique properties of our facebrick created from Southern clay looks just as good when underfoot!

## CARVED BRICK SCULPTURES AND PANELS

Carolina Ceramics offers carved brick panels for exterior or interior walls including signage, fireplaces and decorative detailing. Freestanding sculptures are also available for commercial and residential applications.

After an initial collaborative design process, Carolina Ceramics forms Southern clay into brick which is carved while still wet, numbered, fired and reassembled for a quality check. Once approved, the brick is shipped to your site for installation. The result can be breathtaking.

Show us your idea— we can make it brick and mortar!

## KLADBRICK™ PANELIZATION

Carolina Ceramics Brick Company's KLADbrick outperforms conventional precast concrete wall panels, because the look and feel of real brick is paired with the cost efficiencies of precast panels yielding successes on many levels. KLADbrick fills the void between traditional brick walls and precast concrete panels. KLADbrick is a Kerfed, Locked And Dovetailed brick set into a precast panel.

Consider weather delays and compromised quality as a result of inconsistent jobsite conditions a thing of the past. KLADbrick panels are assembled off-site in a factory, eliminating the possibility of weather delays and ensuring quality control. On-site installation is quick and simple, resulting in less construction delays!

- More flexibility of design and style
- Consistent, timely construction resulting in cost savings
- Less pressure from delays



Private Residence • Columbia, SC • Sierra Modulares



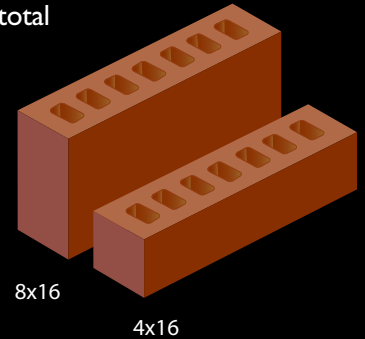
Gaffney High School Sign Sculpture • Gaffney, SC



Tivoli Condominiums, Philadelphia, PA • Crimson Velour Modular KLADbrick  
Architect: Liebman Melting Partnership, New York, NY

# EFFICIENT DESIGN

At a time when everyone is talking about saving money, consider the cost savings of an efficiently-designed brick building. Labor constitutes approximately 60% of the total price of masonry construction! Reduce the labor requirements and you decrease the overall project cost considerably. But that's not all—mortar costs are reduced and most importantly, faster construction time on exterior walls can put the entire project on the fast track.



- Design on 8" module
- Faster construction
- Reduced labor costs
- Less head joints means less potential for water penetration
- ½ bond more aesthetically pleasing

*Pictured left:*  
*Pleasant Ridge Montessori • Cincinnati, OH*  
*Cherry Velour 4x16, Burgundy Velour 4x16, Shadow Gray Velour 4x16,*  
*Shadow Gray Velour Wall Units*  
*SHP Architects • Cincinnati, OH*

*Pictured on cover:*  
*Camden at Potomac Yard • Arlington, VA*  
*Heritage Smooth Engineers • WDG Architecture • Washington, DC*



9931 Two Notch Road • Columbia, South Carolina 29223-4390  
803.788.1916 • Fax 803.736.5218

CarolinaCeramics.com

carolinaceramics@carolinaceramics.com • October 2009

